

# THE SAGE

The Newsletter of SAGE of South Florida

"SENIOR ACTION in a GAY ENVIRONMENT"

FEBRUARY 2008

## SILENCE CAN AWAKE THE INNER WARRIOR

More and more, of late, I've found myself drawn toward the silence. There must be a part of me that knows I cannot find answers I am seeking until I can be quiet enough to listen to my heart.

I know I'm not the only one to whom silence calls. We can do that with nature right where we are. Whether we are gazing at a flower or walking along a forest path or sitting beside a lake, the natural silence of nature always resonates in the quiet spaces within us. To be in true silence we must let go of all activity. Why? Because silence—true silence—allows us to experience our innate wholeness. In deep inner silence, we are always at peace, but there is a key that is often overlooked. To know silence you must first experience it. Just as there is a vast difference between seeing a cool, clear stream and drinking from it, so it is with silence. You can read about it. You can write about it. You can honor it in so many ways, but until you enter into it, you will never experience its healing presence, nor will you know the transforming difference it can make in every aspect of your life.

It seems strange that the thing we need most is the very thing we pay the least attention to. We fill our lives with all the "important" things, expecting our body-system to carry on, regardless. We don't do this with our cars. We know they require maintenance. We know they need refueling. We know they need care. But the body? No, just toss it something on the run and then wonder why it begins to balk and complain. It makes me wonder how our priorities became so confused. When did we cease to hear the song within us? How could we have forgotten the silence that is our sanctuary?

There are certain personality archetypes that we all carry within us, such as the inner child, the lover, the father or the mother. Some of these archetypes present themselves strongly, while others lay fallow. For example, there is an inner warrior in each of us, but in some of us this warrior is underdeveloped

to the point that we are unable to stand up for ourselves, even when necessary. There can be many reasons for this. We may have grown up with a parent whose warrior aspect was overdeveloped, and we responded by repressing ours completely. On the other hand, we may have grown up with parents in whom this aspect was dormant, so we never learned to awaken it in ourselves.

A warrior is someone with the strength to stand up for what he or she believes; some one who perseveres in face of challenges and obstacles; someone who speaks and acts in the service of an ideal; someone who protects those who are too weak to fight for themselves. Regardless of the reasons for an underdeveloped inner warrior, you may begin to notice the lack of its fiery, protective presence and wish to awaken it. You may need to stand up for yourself in a certain relationship or situation, or you may have a vision you want to realize, and you know you will need the courage, energy and strength of a warrior to succeed. Similarly, if you find that you often feel scared, anxious, or powerless, rousing this sleeping ally may be just the antidote you need.

One excellent way to cultivate the presence of your inner warrior is to choose a role model who embodies the qualities of bravery, strength and vitality. This person could be a character in a myth, movies, book, or a historical or living person you admire. Simply close your eyes each day and contemplate the quality of energy that attracts you to this person, knowing that the same potential lives within you. Confirm for yourself that you are capable of handling this energy responsibly, and stoke the fire of your own inner courage.

"HAPPY VALENTINE'S DAY" ■

Jean Johnson, President

Pertinent Information . . . . .	page 2	SAGE Women In Action . . . . .	page 3	Health and Wellness . . . . .	page 7
SAGE Classifieds . . . . .	page 2	Social Notes . . . . .	page 4	Board Bio - Carl M. Galli . . . . .	page 8
SAGE Election Time . . . . .	page 2	Saturday Luncheon . . . . .	page 4	Men's Singles Group . . . . .	page 8
SAGE Co-Ed Drop-in . . . . .	page 2	Invite A Friend . . . . .	page 4	A Special Word of Thanks . . . . .	page 10
Friendly Visitor Program . . . . .	page 2	The Women's Corner . . . . .	page 5	Membership Application . . . . .	page 10
SAGE Birthdays . . . . .	page 3	Name That Tune . . . . .	page 5	Monthly Movie . . . . .	page 11
Welcome New Members . . . . .	page 3	Money Resolutions in '08 . . . . .	page 6	Men's Wednesday Drop-In . . . . .	page 11
Book Bunch News . . . . .	page 3	2007 Balance Summary . . . . .	page 6		

### Highlights . . .

**SAGE of South Florida, Inc.**  
8333 West McNab Road, Suite 239  
Tamarac, Florida 33321

**All Copy Deadline: 8th of the month**  
**Message Line: 954-720-0833**  
**Email to Editor: sageoffice@bellsouth.net**  
**Office Fax: 954-720-9590**  
**Website: www.sagewebsite.org**

**BOARD MEMBERS**

**President** ..... Jean Johnson  
**Vice President** ..... Ken Goodman  
**Secretary** ..... Betty Priscak  
**Treasurer** ..... Hank Brooks  
**Assistant Treasurer** ..... Ken Moore

**BOARD MEMBERS AT LARGE**

Ron Catena, John Chandler, Michael Di Paola,  
Carl Galli, Jan Kronholm, Sal Orlando, Ann Smith.

**COMMITTEE COORDINATORS**

**Advertising** ..... Ann Smith  
**Archivist** ..... Betty Priscak  
**Co-ed Drop In** ..... Mary O'Connor  
**Education** ..... Bob Tomasulo  
**Membership** ..... Ann Smith  
**Men's Drop-In** ..... Norm Peters  
**Men's Singles** ..... John Chandler  
**Newsletter Editor** ..... Michael Di Paola  
**Newsletter Mailing** ..... Les Oldenbusch  
**Office Manager** ..... Ken Goodman  
**Public Relations** ..... Ron Catena  
**Saturday Luncheons** ..... Sal Orlando  
**SAGE Women In Action** ..... Jan Kronholm  
**Social Activities** ..... Carl Galli  
**Volunteer Coordinator** ..... Ron Catena  
**Webmaster** ..... Richard Bunyan

*Appearance of an advertisement in this newsletter does not constitute endorsement by SAGE of South Florida, Inc., of the service being offered. We thank our advertisers for helping us to pay for printing this newsletter.*

**SAGE EDITORIAL POLICY**

SAGE welcomes contributions to this newsletter. An author may request their entry be "anonymous." However, the submission as received by SAGE must be accompanied by the full name and address of the author. Items will be published at our discretion. If we feel we can not publish a submission anonymously, we will contact the author. We reserve the right to edit items for size considerations, clarity, or standards of decency.

**SAGE Classifieds**

**SAGE ADVERTISING POLICY**

Our monthly Newsletter is partially underwritten by advertising revenue. We have a written fee schedule for various sizes and number of months. An insert, instead of display advertising, is also available for businesses and organizations at a very reasonable rate. Contact the SAGE office at 954-720-0833 or E-Mail at sageoffice@bellsouth.net for more information about business cards to full-page ads, classifieds and flyers. We appreciate our business supporters. As members, let's support them as much as possible.

**SAGE ELECTION TIME 2008**

Once again it's time to elect a new SAGE Board of Directors. Most of you know that the members of the Board are hard working individuals who give countless hours of their time to the work of the organization. They help organize the social events, the educational programs, SAGE sponsored activities, raise funds and manage the budget, and oversee the day to day affairs of the organization.

The SAGE Board is elected by the membership at our Annual Meeting in March (this year it is March 30 at the Palm Aire Country Club). A majority of the membership voting in person or by proxy selects the new Board. The officers of the organization are then elected by the new Board at the April Board Meeting.

The majority of the Board will be running for re-election, but we do expect a few vacancies to replace members who are stepping down.

If you have ever thought you might like to serve on the SAGE Board, now is the time to step forward. We are seeking candidates who have the skills and background needed to help run a non-profit organization. **You will need to submit a brief letter of intent as well as a 1-2 page resume to the SAGE office (Attention: Nominating Committee) before February 11, 2008.** The nominating committee will review all applications and prepare the slate of candidates. The March newsletter will contain the nominee's names and short bio's. Ballots will then be sent out in March to be returned via mail or brought to the Annual Meeting. ■

**SAGE CO-ED DROP IN**

Imagine being invited to visits a friend's home, sitting in the living room with six to ten other, chatting about any and all subjects that come to mind. That's the SAGE Men's and Women's Thursday afternoon drop in!

You are invited, as well as your non-SAGE acquaintances. This SAGE sponsored afternoon event welcomes everyone, including out of town visitors, and any new folks in town. Stop by the GLCC, Thursday afternoons at 1PM and enjoy an interesting two-hour visit to our living room. **This is a SAGE sponsored activity.** ■

**SAGE FRIENDLY VISITOR PROGRAM**



**We are not just fair weather friends, but people who really care about our SAGE family.** If you know of anyone that needs a friendly call, is sick, in the hospital, recently lost a loved one, or just needs cheering up or a ride to one of our SAGE sponsored functions or activities, please contact the SAGE office at 954-720-0833, so that arrangements can be made, **OR**, if you prefer, you may contact either Caroline Leto at 954-925-6288; Jean Arthurton at 561-381-3103; or Leo Glickstein at 954-427-6877. **This is a SAGE sponsored activity.** ■

## SAGE BIRTHDAYS FOR FEBRUARY

The SAGE Board would like to acknowledge the following members whose birthdays are in FEBRUARY, as well as all the other members whose birthdays are this month that we don't have:

Michael H. Devlin . . . Feb 03	Arthur B. Smith . . . . Feb 16
James Smith . . . . . Feb 04	Gary Kempler . . . . . Feb 18
George H. Hibberd . . Feb 06	Roslyn Schutzer . . . Feb 23
E. Reid Bernier . . . . Feb 07	Joyce Schweitzer . . . Feb 23
Godfrey Isaacs . . . . Feb 09	Claudia Krysiak . . . . Feb 26
Richard Rogers . . . . Feb 09	Robert Greene . . . . Feb 27
Jack Myers . . . . . Feb 11	Brian Saxe . . . . . Feb 27
Joel Tendler . . . . . Feb 15	

If, when you renewed your membership or became a new member you did not give us your birthday, you may call the office and leave the information at: (954) 720-0833 or e-mail us at: [sageoffice@bellsouth.net](mailto:sageoffice@bellsouth.net)

## WELCOME TO OUR NEW MEMBERS

Gerald Dubois  
Lee M. Eriquazzo  
Barry Feinstein  
Marc S. Horowitz  
Ronald C. Howard  
Thomas Kukulka  
Janice C. Ligon  
Carol L. Milman  
James L. O'Brien  
George Samuel  
Joy E. Witchel

### 5 YEAR ANNIVERSARIES

Julio A. Ajon  
Charles Scarcella  
Allen Silver

### 10 YEAR ANNIVERSARIES

William Cordes  
Ted Emery  
Don T. Gallagher  
Angela Giella  
Helen Harris  
Jean Johnson  
Philip Norris  
Betty Ann Priscak

## THANKS FOR JOINING SAGE

## PAID ADVERTISEMENT



### ROBIN L. BODIFORD ATTORNEY AT LAW

WILLS • TRUSTS • TRUST ADMINISTRATION  
PROBATE • DOMESTIC AGREEMENTS  
REAL ESTATE

AUTHOR: "Fresh Start Bankruptcy"  
& "A Simplified Guide to Creating a Personal Will"  
(John Wiley & Sons, 2003)

LAW OFFICES OF ROBIN L. BODIFORD, P.A.  
2550 N. FEDERAL HWY., SUITE 20  
FORT LAUDERDALE, FLORIDA 33305  
[www.robinbodifordlaw.com](http://www.robinbodifordlaw.com)

(954) 630-2707

## BOOK BUNCH NEWS: ~ by Bob Tomasulo ~



It's February already and just as we put the holiday decorations away it's time for Valentines Day! This month is also important for a couple of other reasons. We have President's Day (for those of you old enough to remember it is a combination of Lincoln and Washington's Birthdays). And it is also Black History Month.

The Book Bunch celebrates the latter with a work by acclaimed author Audre (Audrey) Lorde. This distinguished writer is not as well known as some of her contemporaries but she should not be overlooked. We have selected her work, "**Zami: A New Spelling of My Name,**" as our February selection. The book explores the physical and emotional aspects of Audre, a black poet, and her relationships with other women.

Lorde, self identified as a black feminist lesbian poet warrior, her work gives special attention to the dynamics of being a black woman. She was born in 1934 and died in 1992, so her life spanned both the black civil rights movement as well as the gay rights movement. The challenges had a great deal in common and her beautiful prose speaks of her blackness and lesbianism not as separate but as unified.

Join us February 9 at Border's Books on Sunrise Blvd. in Ft. Lauderdale. We meet at 2:00. **This is a SAGE sponsored activity.** ■

## SAGE WOMEN IN ACTION

The SAGE Women's February luncheon will be Feb. 13, at the wonderful **ISMAMORADA FISH COMPANY**, located in Dania Beach. The restaurant has fabulous selection of seafood, beef and chicken entrées. They also have a Raw Bar plus sushi appetizers for those of you who delight in them. Meal costs run between \$10 and \$20. The restaurant will provide separate checks.

**NOTE: THE LUNCHEON WILL START AT 11:30**-this is a very busy and popular restaurant and we need to be there early to confirm our table.

**Reservations a must – please call Jan at 954-428-2998 by Tuesday Feb.13.**

Directions: Take I-94 to the Griffin Road exit. At the end of the ramp go west. At the first light, take a left turn onto ANGLER'S AVE. Take an almost immediate left at GULF-STREAM WAY. Follow the road **past** the rail station, (the road curves around the station), past the Courtyard Hotel. Take a left into Sportsman Park. Continue down the driveway -you will see the OUTDOOR WORLD and BASS PRO SHOP. The restaurant entrance is just to the left of Bass Pro Shop. The restaurant's number is 954-927-7737 if you need clarification of the directions. **This is a SAGE sponsored activity.** ■

## Happy Valentine's Day!

## SOCIAL NOTES ~ by Carl M. Galli ~

It's February, and love is in the air once again.

And to show how much we love and appreciate you all, SAGE has planned a very special **Valentines' Dinner** at **Primavera Restaurant**, on **Sunday, Feb. 10th**. Once again, "our very own" **Chef Giacomo** has created a menu just for SAGE's guests. If you come to our Saturday "Lunch and Learn", or go to Gita, you know what wonderful food he prepares. But, for this occasion, he is going to outdo himself: There will be plated appetizers, an hour of complimentary wine and beverages, a special orange cream cake, and even espresso. Because we have hired **Mr. Larry Roberts** (featured in "New Times") on keyboard and vocals, we will be setting-up a dance floor, so table space is at a premium. We urge you to get your paid reservations in early so as not to be disappointed when this event surely sells out. Even if (like this writer) you don't have a lover or boyfriend or girlfriend or significant other or whatever, you can still come out and enjoy the company of your loving and caring SAGE brothers and sisters. And who knows, you may even find one, or all, of the above.

Plans are moving ahead for our **Picnic at T.Y. Park** on **Saturday, Feb. 23rd**. We've hit a bit of a snag with hiring a caterer, and we are looking for others. (If you know of any, please e-mail me at: **SAGESOCIAL@CS.COM**) This should be a lovely and unhurried day in the fresh air for us; and this time of year there should be no excessive heat or rain or flying insects to spoil it.

**SAVE the DATE(s):** Thursday, **March 13th: SAGE Bus Trip** to the Actors' Playhouse to see "Footloose". Saturday: **March 15th: SAGE Health Fair** at the GLCC. Sunday, **March 30th: SAGE's Annual Meeting** at the Palm Aire Country Club.

**OCTOBER CRUISERS:** By now you should have received your special mailing regarding the **October 28th-November 5th, 2008** cruise to **Panama-Costa Rica-Belize** aboard the **Carnival "Miracle"**. Please call **Carnival at 1-866-721-3225** and use **Booking Number: 7V10K8**. We were only able to reserve 48 Cabins in *all* categories, and we may not be able to get any more at these prices. **Remember: At least one person in each Cabin must be a SAGE Member.**

**OTHER HAPPENINGS:** Since SAGE cannot possibly sponsor every event, we will point out a few that may be of interest to our community:

**Broward Center: "Capitol Steps"**. Through Feb. 3rd. Call: (954) 462-0222. Or Online: [www.browardcenter.org](http://www.browardcenter.org).

**Gable Stage (at the Biltmore Hotel): "The Little Dog Laughed"**. Through (at least) Feb. 3rd. (Advisory: Male Nudity and Sexual Content) Call: (305) 445-1119. Or Online: [www.TheaterMania.com](http://www.TheaterMania.com).

**Amaturo Theatre: Ft.Lauderdale Gay Men's Chorus:** "6th Annual South Florida Choral Festival", Saturday, Feb. 9th. Call: (954) 462-0222. Or Online: [www.ftlgmc.org](http://www.ftlgmc.org).

**Rising Action Theatre Company: "The 11 o'Clock Number"**. Through (at least) Feb. 17th. Call: (800) 595-4849. Or Online: [risingactiontheatre.com](http://risingactiontheatre.com).

**Stage Door Theatre: "Thoroughly Modern Millie"**. Feb. 22-March 30. Call: (954) 344-7765. Or Online: [www.stage-doortheatre.com](http://www.stage-doortheatre.com).

**Coral Springs Center: The Original Florida Follies:** "Broadway to Hollywood". Sunday, Feb. 24th. Call: (954) 720-1880. Or Online: [www.theoriginalfloridafollies.com](http://www.theoriginalfloridafollies.com).

Enjoy...

## MONTHLY BOARD MEETING & SATURDAY LUNCH & LEARN

12:30 PM, FEBRUARY 2, 2008

AT THE HERB SKOLNICK  
COMMUNITY CENTER

800 S.W. 36th Avenue, Pompano Beach, FL

**RESERVATIONS REQUIRED!!!!!!!!!!!!**

**Members with reservations: \$10.00**

**Members and Guests without  
Reservations: \$12.00**

Doors open at 12:00PM.

If you arrive early, please wait in the lobby.

*Please reserve early as our luncheons  
have become very popular!*

**For reservations call the SAGE Message  
Hotline, 954-720-0833 or reserve by  
E-Mail: [sageoffice@bellsouth.net](mailto:sageoffice@bellsouth.net)**

**This month's speaker is SAGE member  
BARBARA SUSSMAN.**

*Topic: "A Different Side of Alzheimer's"*

~ MENU ~

Special House Salad

Gnocchi ala Romana (Semolina Gnocchi  
with Butter and SAGE Sauce)

Braised Beef with Red Wine  
and Vegetable Sauce

Mashed Potatoes

Dessert: Coconut Flan

## INVITE A FRIEND

Our monthly Saturday LUNCH and LEARN provides a perfect way for you to introduce a friend to SAGE. Not only is it conveniently located at the Herb Skolnick Community Center in Pompano Beach, but the time is right – 12:00PM; the food is excellent, catered by PRIMAVERA of Fort Lauderdale; the speakers are informative, addressing our issues; and – the company is good! What more could you ask for? Well – if your friend joins SAGE at the Lunch and Learn or within the 30 days following, he or she will receive a special first time membership rate of \$25.00. So invite a friend to join you and get to know SAGE. ***This is a SAGE sponsored activity.*** ■

## THE WOMEN'S CORNER ~ by Jan Kronholm ~

This is a new column of news/information of interest for the SAGE Women. Topics will vary and hopefully will be enjoyed. I'm open to ideas for topics, and if you would like to write something for the column that would be great. I would love to hear from you with ideas and/or articles. Please call me at 954-428-2998 with your thoughts and ideas. The Column must be submitted to the SAGE Editor by the first of every month.

### CLUTTER

It was 4 years ago this January that I moved to Florida and came 'clutter' free, meaning that I got rid of 6 rooms of furniture and 25 years of acquired 'stuff'. Free at last, free at last from clutter – I was not going to allow it to happen again.

Well, guess what!! Again I have clutter. But this time I don't have a large cellar or garage to store the stuff so, now I really have to do something about it.

I recently was reminded of the group "WOMEN IN DISTRESS" and that they have a thrift store in Margate. I visited the place and found a wonderful group of women supporting women, and their store has good, useable items. My stuff would be welcomed.

I am going to start bringing my items to this wonderful, worthwhile store as items are always needed. I encourage you to do so, too. If you have any items to donate you can visit their shop or, after a SAGE lunch or Women's lunch, you can give the items to me and I'll be glad to deliver them

The "Women In Distress Thrift Store" is located in the Village Shopping Center (look for Dunkin Donuts), 1372 North State Road Seven, in Margate. Their number is 954-975-7425. Call me if you have any questions ■

### PAID ADVERTISEMENT

  
**BANKERS**  
LIFE AND CASUALTY COMPANY  
*We specialize in seniors*



Gary Kempler  
Senior Trust Advisor  
(954) 328-5418

Medicare Specialist offering:  
Low Cost Supplements  
Part D Drug Plans

Long Term Care at *affordable* rates

Life Insurance

Disability Insurance

Guaranteed Retirement Investments

## NAME THAT TUNE

Name That Tune will present its special "Valentine's Edition" on February 12th at 1 PM at the GLCC, 1770 N. Andrews Ave., Ft. Lauderdale. Players are asked to name tunes from the 40's, 50's and 60's and lots of prizes are awarded. "Name That Love Song" will be the special "Valentine" round of tunes. This program is for GLBT seniors, their partners and friends. Refreshments are free. Admission is \$5 at the door. ■

### PAID ADVERTISEMENT



**Comfort  
Keepers®**

*Comforting Solutions for In-Home Care®*

Prepare meals  
Run errands  
Laundry  
W-2 employees

Grocery shop  
Light housekeeping  
Respite Care  
24 hour care available

English Speaking Companionship

**954-825-0155**

[www.COMFORTKEEPERS.COM](http://www.COMFORTKEEPERS.COM)

REG.# 228141

### PAID ADVERTISEMENT

**TROPICS  
SIDE|CAR**

**LUNCH DAILY 11am-3pm**  
Now with **Tropics Salad Bar  
& Soup Station**  
plus **NEW Internet Café!**

**Sunday Brunch only \$15<sup>95</sup>**  
**Nightly Specials**  
**Entertainment 7 Nights!**

**Happy Hour**  
**2-for-1 All Brands**  
SUNDAY-FRIDAY 4-9pm  
SATURDAY 4-8pm



Proudly serving South Florida's  
Gay & Lesbian Community  
since 1995

RESTAURANT  
PIANO BAR  
CABARET

COMMUNITY  
CHOICE  
AWARDS  
2000, 2003 & 2004  
Restaurant of the Year

2000 WILTON DRIVE (N.E. 4TH AVENUE) • WILTON MANORS, FL 33305  
PH: (954) 537-6000 • FAX: (954) 563-4269 • Dinner Reservations Suggested

## Money Resolutions in '08

### Six sound moves for a fiscally fit future

After the holiday celebrations are over, it's time to refocus on goals for the coming year. And while resolutions to lose weight, exercise more or give up caffeine are all worthwhile, it's the financial resolutions that you make and keep this year that can really make a difference come retirement time. Here are six worth implementing:

**Get organized.** Knowing where your receipts, investment statements and tax returns are is an essential component of your financial plan. Setting up a system now will keep you organized throughout the year. Create separate folders for all of your 2007 tax-deductible expenses, your banking and investment statements, insurance claims and pay stubs/W2s. This one simple step will get your financial year off to a good start.

**Make copies of important documents.** In an emergency, you may need to quickly locate critical records such as insurance policies, bank account and credit card numbers. Compile a comprehensive list with account information and contact numbers for all-important accounts. Also make copies of deeds to property, stock and investment statements and other valuable holdings. Put everything in a safe place in your home and keep a copy in a location away from home, such as in a safety deposit box.

**Start a plan for getting out of debt.** It could be a daunting way to start the year, but there is no better time than now for a financial reality check. Write down your credit card balances, the interest rates being charged and the minimum monthly payments. Figure out which cards (those with the highest rates) to pay off first. There are many good books on the subject, and depending on how much debt you have, you may want to meet with a financial advisor to develop a specific pay down plan. Also, try to resist the temptation to pay off your credit cards with a home equity loan or line of credit. You'll only be trading an unsecured loan for a secured loan, without getting to the root of your tendency to overspend.

**Review your 401(k) plan.** Or sign up, if you haven't already done so and your company offers a retirement plan. Many employers offer matching funds – sometimes as much as 50% of your contributions and up to 6% of your salary. That's free money! If you are already in a plan, now is a good time to review your allocations for the past year to see if you need to make adjustments.

**Check your insurance coverage.** Did you make home improvements this year? Have a baby? Change jobs? You may want to make changes to your insurance policies to make sure you are adequately covered. If you or your spouse have neglected to purchase life, long-term care or disability insurance, now is the time to meet with a qualified professional to discuss the benefits of these important financial safeguards.

**Review your estate plan.** While not something most people look forward to doing, documenting your wishes in the event of your death is essential. If you have not done so already, make plans to draw up a durable power of attorney for health care and

## 2007 Balance Summary

### SUMMARY BALANCE SHEET AS OF DECEMBER 31, 2007

<b>CURRENT ASSETS:</b>			
Cash in Banks	7,794		
Certificates of Deposit	<u>82,938</u>		
Total			90,732
<b>OTHER ASSETS:</b>			
Prepaid Expense	3,246		
Security Deposits	<u>500</u>		
Total		<u>3,746</u>	
<b>TOTAL ASSETS</b>			<u>94,478</u>

### SUMMARY PROFIT AND LOSS YEAR ENDED DECEMBER 31, 2006

<b>INCOME:</b>			
Endowments	13,646		
Advertising	5,028		
Donations	11,238		
Membership Dues	11,730		
Raffles	1,625		
Interest and Dividend Income	4,934		
Sundry	<u>7,490</u>		
Total			55,691
<b>EXPENSES:</b>			
Advertising	581		
Awards & Honors	92		
Charity	1,931		
Insurance	1,998		
Taxes and Licenses	61		
Newsletter	13,523		
Office Expense	5,069		
Postage	2,854		
Rent & Storage	6,900		
Telephone	2,245		
Sundry	<u>5,903</u>		
Total			<u>41,157</u>
<b>NET INCOME</b>			<u>14,534</u>

finances and a living will. These simple steps can help protect your assets and loved ones should the unthinkable happen.

Getting your financial house in order takes more than just writing down a list of resolutions. It takes discipline and planning. But having clearly identified goals and taking consistent steps towards them will help you make great strides toward having a financially happy new year. ■

# Health and Wellness

## Long-Term Care 101 - Face the Facts

It's getting harder to avoid the topic of long-term care these days. Almost everyone has a parent or relative who is receiving, or has received, long-term care. And the cost is amazingly high. Although people are reluctant to broach this topic, many in the Gay, Lesbian, Bisexual and Transgender (GLBT) community are concerned about their own long-term care. Will we need it? Will we be able to afford it? Will the cost of care wipe out our savings? Who will take care of my life partner or me?

### **Face It — We're Getting Older.**

Individuals aged 65 and older currently make up about 12.4 percent of the population, but based on projections this figure is expected to increase to about 19.6 percent by 2030.<sup>1</sup>

The increase in the percentage of seniors is due, in part, to the aging of the baby boom generation. It is also attributable to increases in life expectancy. In 1950 life expectancy was only 68.2 years. By 1975 it had increased to 72.6 years and by 2002 life expectancy for all individuals had risen to 77.3. For those aged 65, life expectancy was 18.2 years in 2002 as compared to just 10 years in 1950.<sup>2</sup>

The longer we live, the greater the risk of requiring some form of long-term care in our lifetime. According to the United States Department of Labor, the elderly population requiring long-term care services will more than double in the next 30 years to more than 70 million.<sup>3</sup>

### **Face It – Americans are using more long-term care services.**

Improvements in healthcare have made sudden death from acute diseases less likely. But the chances of incurring a debilitating disease that may require long-term care has increased.

Changing cause-of-death trends are reflected in nursing home occupancy. In 1999 there was an estimated 1.6 million individuals in nursing home care.<sup>4</sup> Even with the use of alternatives such as home health care and assisted living, more of us will begin to require some type of nursing home care.

As the baby boom generation continues to age and as aging boomers live longer, the system will strain to deliver the needed services. As demand outstrips supply, costs can only be expected to rise.

### **Face It – Someone has to pay.**

Some of the concern we share about long-term care centers around the cost. Nursing home facilities provide the broadest range of services, but are by far the most

expensive. Annual nursing home costs around the country averaged \$74,000 per year in 2006.<sup>5</sup>

Residential community care facilities, also known as assisted living facilities, adult family/foster homes, congregate homes, continuing care retirement communities, and board and care homes, are a growing segment of the long-term care delivery system. Although typically licensed by the state, regulation of such facilities is less stringent than for nursing homes because fewer medical services are provided.

Home-and-community based services are designed to provide the minimal level of care to enable individuals to remain in their own homes. Examples include senior centers, adult day care, and "meals on wheels," transportation, therapy services, and homemaker/chore services.

Many of us mistakenly believe that Medicare or Medicaid will pay for our long-term care needs. Medicare mainly covers skilled care after you have been in the hospital for at least three days and generally does not cover personal or home care services. Medicare was not designed to pay for extended long-term care and it should not be counted on as a resource to meet this need.

Medicaid is the federal/state health insurance program designed to pay for nursing home care for the very poor. Medicaid dictates the type, amount and location of care. If you have assets to protect, Medicaid is generally not for you.

Some people believe they can rely on their personal resources to pay for their long-term care needs. This is called self insurance. Unfortunately, many people underestimate the cost of long-term care and end up using savings that they have built up over a lifetime. Others may have to sell assets, such as their home.

### **Face It – Long-term Care Insurance may be a great option.**

Instead of depleting their assets, relying on the government for help, or burdening loved ones, many people in the GLBT community are turning to long-term care insurance to help cover the costs of extended care. This type of policy covers care services both inside and outside the home.

If you believe you're too young to begin thinking about long-term care, consider that many people who require long-term care are working-age adults between the ages of 18 and 64. Plus, the premiums for long-term insurance are much lower the younger you are when you purchase the policy. ■

## BOARD BIO - MEET CARL M. GALLI

These bios and resumes can be very dry and staight forward - or they can be a mix of fact and fiction - which is ultimately much closer to the truth - and, hopefully, more fun to read. So I'll choose the latter route:

Born in Manhattan, to a noble-but-poor mother (my grandfather was a penniless Italian Count, whose family emigrated to the U.S. during the revolution) and a much older and monied father (I won't say what his father was into), we moved when he was forced to retire to South Florida while I was still in school. Graduated "Summa Cum Laude" from St. Thomas University (Miami, FL.), with twin degrees in English and Political Science. I was a Woodrow Wilson Fellowship Nominee, and the winner of the W.A.R. Godwin Continuing Education Fellowship for Postgraduate Studies, studying for one year at the College of William and Mary (Williamsburg, VA), from which I received a Masters Equivalency in Administrative Law. And a call to government service in the form of several job offers from various government agencies, including the CIA.

(I was also one of the youngest bylined reporter-interns for the Miami News/Miami Herald in the late 1960's receiving the National Newspaper Publishers Association Best Staffer Award in 1967.)

In April, 2004 I retired from the U.S. government, after having worked for 31 years in the Social Security Administration, where I served in many capacities, finding my niche in disability processing and public relations

In August, 1985 I was appointed as the SSA liaison to the Miami Beach Police Dept., in which capacity I served (through current Chief Don DeLucca) until my retirement. I worked alongside FEMA officials, assisting in the allocation of housing and subsistence to victims of Hurricane Andrew. I served as an advisor to the Miami Beach Retirement Board, as well as to its Community Affairs Office, and the Office of the Mayor.

I was an "out" public official before it became fashionable, and I served as SSA's liaison to many South Florida HIV/AIDS and Gay and Lesbian organizations.

Additionally, I was utilized in public and media relations, presenting seminars on new entitlement programs and

appearing on TV. I also organized and budgeted seminars and symposia, for which I received many awards from both my agency, and various public and nonprofit groups.

You all know I am vertically challenged; but only a few know that I am directionally challenged as well. (Can't even find my bathroom at night without a night lite.)

Come March 30th (coincidentally the same date as our Annual Meeting) I will be 59 years old. Now you may see some other articles that claim I was born on March 31st. This was a typo, perpetrated by my mother at an early age, because she had wanted an April Fools' baby (go figure). But when the Nixon draft came around this gave me a very low "lottery" number, so we found my original birth certificate - and, lo-and-behold, I was immune to the draft! Hmhmhm!

Recently, I have become actively involved in several local community groups, not the least of which is the Board of Directors of Palm Aire Association #1 - and of course SAGE of South Florida, in which capacity I now serve as your Social Chairman. ■

## MEN'S SINGLES GROUP

~ by John Chandler ~

The mission of the monthly gathering is to introduce men who are not in a long term relationship to other men who are in the same situation. The purpose of the monthly meetings is to meet new people, promote and develop a network of friendship for support and socializing, and to provide support to those who have lost their partners because of death or the end of a relationship.

The next meeting is on Monday, February 25, 2008. In honor of Valentine's Day, we are extending an invitation to couples to join the singles for this special evening!

Join us for cocktails at the bar at 5:30PM followed by dinner at 6:30PM at Tropics. Please contact John Chandler at 954-427-5355 or e-mail at: [stonyman4u@aol.com](mailto:stonyman4u@aol.com), to make your reservation, and don't forget to wear your "RED SHIRT".

*This is a SAGE sponsored activity.* ■

*Please remember SAGE in your charitable donations and estate planning.*

### PAID ADVERTISEMENT

#### Gerardo's Cleaning

Home and Office Cleaning

Gerardo Ratto

Voice: 954-441-5770

Cell: 954-224-5769

[rattog@aol.com](mailto:rattog@aol.com)

#### CLEANING:

General House and Office Cleaning.

All guaranteed, reliable. Broward County.

**CALL GERARDO 954-224-5769 OR 954-441-5770**



### PAID ADVERTISEMENT



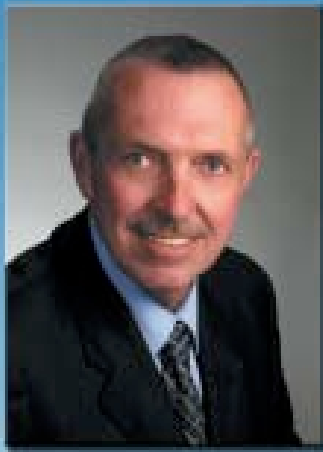
*Sunshine Cathedral*

A METROPOLITAN COMMUNITY CHURCH  
AFFILIATED WITH THE CENTER FOR PROGRESSIVE CHRISTIANITY

#### Sharing the Light with the World

1480 SW 9th Avenue  
Fort Lauderdale FL 33315 USA  
Grant Lynn Ford, CANON PASTOR

OFFICE 954-462-2004  
FAX 954-462-7070  
TOLL-FREE 877-750-6390



Law Offices

## Arthur B. Smith, P.A.

Galleria Professional Building  
915 Middle River Drive, Suite 420  
Fort Lauderdale, Florida 33304  
Phone: 954-564-8844  
Email: ASmith5826@bellsouth.net

Member of the Florida  
and Massachusetts Bar

---

### Trusts

Revocable, Irrevocable  
and  
Charitable Remainder

### Wills

Last Will and Testament  
and  
Related Documents

### Probate

Estate and Trust Administration

### Real Estate

All Transactions

NOTICE: The hiring of a lawyer is an important decision that should not be based solely on advertisements. Before you decide, ask the attorney to send you free written information about qualifications & experience.

**A SPECIAL WORD OF THANKS**

*ALL of you have been so nice  
in such a thoughtful way,*

*It's hard to find a way to thank  
each one of you today,*

*But hopefully, this expression  
will show, at least in part,*

*The warm and grateful thoughts  
this brings straight from my heart.*

*I would personally like to thank all of those  
who were good with notes, cards, and calls  
during my recent recovery from a heart  
attack. I'm mighty grateful to all of you  
who cheered me on!*

**RICHARD LANGHORNE**

**PAID ADVERTISEMENT**



**WHY MAKE IT DIFFICULT ON YOURSELF?  
WHEN I CAN SWEAT ALL THE DETAILS**

- SO WHETHER YOU'RE INTERESTED IN RENTING
- # DOWNSIZING FROM HOME TO CONDO
- # PURCHASING A CONDO OR HOME
- # RELOCATING FROM THE NORTH
- # BUYING A WINTER RESIDENCE
- # OR SIMPLY BECAUSE YOU HAVE QUESTIONS

**CALL ME AS I'VE LIVED HERE FOR 32 YRS  
AND IT WOULD CERTAINLY BE MY  
PLEASURE TO ASSIST YOU**

**JOE ROMAN ®**  
**HANSEN CENTURY 21**  
 1881 NE 26TH ST.SUITE # 95  
 WILTON MANORS FL 33305  
 OFFICE: 954-351-6060  
 FAX: 954-351-6050  
 CELL: 954-557-3416  
 JOSEPHWROMAN@GMAIL.COM  
 WWW.REALESTATEINSOUTHFLA.COM



**“SENIOR ACTION IN A GAY ENVIRONMENT”**

Dear Folks, Please include a stamped, self-addressed envelope, so we can send you your new MEMBERSHIP CARD. THANK YOU.

NAME: \_\_\_\_\_

ADDRESS: \_\_\_\_\_

CITY: \_\_\_\_\_ STATE: \_\_\_\_\_ ZIP: \_\_\_\_\_

HOME PHONE: \_\_\_\_\_ OFFICE: \_\_\_\_\_ CELL: \_\_\_\_\_

E-MAIL ADDRESS: \_\_\_\_\_ BIRTHDAY: \_\_\_\_\_

COMMITTEE INTEREST: \_\_\_\_\_

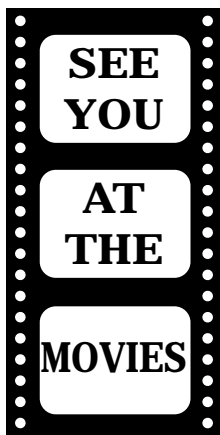
CIRCLE ONE:      RENEWAL      NEW MEMBER

**PLEASE ENCLOSE A CHECK IN THE AMOUNT OF \$35.00 MADE PAYABLE TO: SAGE OF SOUTH FLORIDA**

**MAIL TO:**  
**SAGE of South Florida, Inc.**  
 8333 West McNab Road, Suite 239  
 Tamarac, FL 33321

**SAGE NEEDS YOU!**  
**PLEASE JOIN OR RENEW TODAY**

**For additional information, please call the message line: 954-720-0833**



## with Carl M. Galli and Ken Goodman

Continuing our Month of Love, our February 18th movie is the 1977 Canadian Independent film "Outrageous". But this comedy is not your usual love story. Directed and co-written by **Richard Benner**, it stars **Craig Russell** (as Robin Turner) and **Hollis McLaren** (as Liza Connors), as two mis-matched roommates: One a "dazzling" drag queen; the other a pregnant schizophrenic.

"Outrageous" is a very special film. Imagine...it's the 70s... (and) the announcer says: Ladies and Gentlemen: Ms. Judy Garland. You think...Judy Garland? I thought this woman was dead. But the woman on the stage is not Judy Garland, but **Craig Russell...one of the best female impersonators of our century**: Not only able to imitate the look of his idols...But also imitate the voices of the women. In the film he plays a gay character (which he really was) who shares a flat...and makes his unbelievable shows in the evening. Craig Russell died too early of AIDS...." (Excerpted from **IMDb.COM**)

Nominated for, and winner of several international film awards (including the 1978 Berlin International Film Festival "Silver Bear" for Craig Russell), "Outrageous" screens at **4PM, at the GLCC**. Followed by dinner. **This is a SAGE sponsored activity.** ■

## WEDNESDAY MEN'S DROP-IN ~ by Ron Catena ~

Every Wednesday from 1-3 pm some of South Florida's most dynamic and interesting movers and shakers gather at the GLCC for the SAGE-sponsored Men's Drop-In group. Anywhere from 35 to sometimes over 50 guys meet together to enjoy each other's company; give thumbs up/thumbs down to movies they have seen; shout bravos or give polite applause to whatever shows are performing around town; hear about old and new restaurants we can all enjoy (or not); and, of course, discuss events shaping our world today. Humor and friendship abound. Everyone's opinion is respected. This fast moving, informal meeting is moderated by our own beloved Norm Peters.

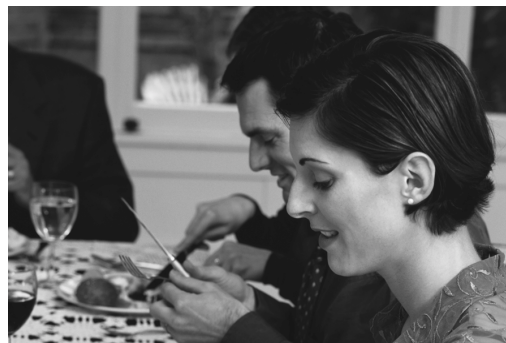
The men of Wednesday's Drop-In also gather every few weeks for dinner at a local restaurant where everyone has a chance to socialize and get to know one another better. Our recent dinner at CeCe's Fish Camp drew over 40 members and guests.

Coordinated by Ken Merryfield (assisted by his partner Fred Berger) our informal holiday luncheon at the GLCC drew over 50 participants for a fun afternoon.

So if you haven't experienced the fun and friendship of the Wednesday Men's Drop-In (or haven't attended for a while) we urge to stop in any Wednesday at 1PM, and we'll welcome you with hugs and lots of smiles **This is a SAGE sponsored activity.** ■

## PAID ADVERTISEMENT

# So many "Italian style" restaurants...



## But only one "authentic" Primavera!

Lake Como, near Milan, is famous for fine Italian cuisine. It's where chef/owner Giacomo perfected his culinary talent. No wonder his menu at Primavera features selections you would only find in Italy, with the freshest ingredients and classic flair. All served with professional attention. Vero Italiano—true Italian! Join us at Primavera, and you'll taste it.

Dinner 7 Nights 5:00-10:00 PM  
Reservations suggested  
Private room available  
For 10 to 150 guests  
Lunch or dinner



830 E. Oakland Park Boulevard, Fort Lauderdale  
954.564.6363 • [www.trueitalian.com](http://www.trueitalian.com)

## Support The Party That Supports You JOIN THE DOLPHIN DEMOCRATS TODAY

Join us for 2008 as we work toward the big prize - recapturing the White House. There is also much to do in Florida and Broward County as we work to ensure the voice of the GLBT community is a vital part of our political process.



Membership is only \$25, \$40 for a couple.  
We meet every 2<sup>nd</sup> Wednesday, 7:30 pm  
at the GLCC, 1717 N Andrews Ave.  
in Fort Lauderdale.

To join, visit our website at [www.dolphindems.org](http://www.dolphindems.org),  
call 866-478-8262 for more info, come to our next meeting  
to learn more, or tear off and return this form

Please send me a membership brochure:

Name \_\_\_\_\_  
Address \_\_\_\_\_  
City/State/Zip \_\_\_\_\_

Please clip and return to:  
Dolphin Democrats, PO Box 7437, Ft. Lauderdale FL 33338

**PAID ADVERTISEMENT**

**Broward's Oldest Steak House  
and Seafood Restaurant**

*"Since 1949"*

OPEN 7 DAYS A WEEK

989-2500

**Famous For**

**CHAR BROILED STEAKS**

**FRESH SEAFOOD**

**ITALIAN CUISINE**

**PRIME RIB**

THE ORIGINAL



**Tropical  
Aces**

**Service ...**

**Attentive**

**Prices ...**

**Reasonable**

**Atmosphere ...**

**Inviting**

Monday through Saturday 4:30 p.m. to 10:00 p.m.

Sunday 3:00 p.m. to 9:00 p.m.

**2500 Griffin Road (1/2 mile west of I-95)**

★ MUSIC NIGHTLY ★ BANQUET FACILITIES

★ FULL COCKTAIL LOUNGE

*Happy Hour – 1/2 Price Drinks Sun-Fri 'till 7:00 pm.*

*New England Clam Bake – 1.1/4# Maine Lobster for \$16.95*

**PAID ADVERTISEMENT**



**ANDREWS  
DINER**

*"A Family Restaurant"*

*Daily Homemade  
Lunch and Dinner Specials*

**Hours:**

Mon., Tues., Wed. 7:00AM - 3:00PM

Thurs., Fri. . . . . 7:00AM - 8:00PM

Sat. . . . . 7:00AM - 3:00PM

Sun. . . . . 7:00AM - 1:30PM

**HOSTS: ANGELO, GERRI & MARLA**

**2980 N. Andrews Avenue**

**Fort Lauderdale, Florida 33311**

**(954) 563-3555**

**SAGE MISSION STATEMENT**

**SAGE** of South Florida is a non-profit organization for **Senior Action** in a **Gay Environment** to enrich the lives of the GLBT senior community through membership inclusive of age, gender, race, nationality and religion. We believe this can be accomplished by sponsoring social alternatives to provide personal interaction, offering educational opportunities to deal with the special needs of aging, and promoting contact with the isolated and homebound persons of our community. **SAGE** is also an advocate for the concerns and needs of the senior GLBT community at large, providing referral information of community resources and promoting inter-generational communication in the GLBT community.

**SAGE** was founded in 1994 as a Florida "not for profit" Corporation. (Federal Tax-Exempt status of 501(c)3 allowing tax-deductible donations). ■

**PAID ADVERTISEMENT**



**FRED HUNTER'S**

SINCE 1890

FUNERAL SERVICE • CREMATION • CEMETERIES

**718 S. FEDERAL HIGHWAY, FORT LAUDERDALE**

**6301 TAFT STREET, HOLLYWOOD, FLORIDA**

**2401 S. UNIVERSITY DRIVE, DAVIE, FLORIDA**

**MARK VAN REES, MANAGING DIRECTOR**

**SCOTT CUMMING, MANAGING DIRECTOR**

**FAMILY OWNED AND OPERATED**

**FUNERAL HOMES IN FORT LAUDERDALE,**

**HOLLYWOOD, DAVIE/COOPER CITY,**

**AND**

**HOLLYWOOD MEMORIAL GARDENS CEMETERY**

**HOLLYWOOD, FLORIDA**

**954-527-1550**

**WWW.FREDHUNTERS.COM**

## SAGE 3 MONTH CALENDAR OF EVENTS AND ACTIVITIES FEBRUARY 2008 THRU APRIL 2008

FEB 2008	ACTIVITY / EVENT
<b>SATURDAY 02/02</b>	<b>BOARD MEETING: 9:30 AM LUNCH &amp; LEARN: 12:30PM</b> HERB SKOLNICK COMMUNITY CENTER-PALM AIRE 800 SW 36TH AVE, POMPANO BEACH
<b>TUESDAYS 2ND &amp; 4TH</b>	<b>COMPUTER CLUB</b> CONTACT KEN GOODMAN FOR DETAILS AT: (954)720-0833
<b>WEDNESDAY</b>	<b>MEN'S DROP IN 1PM GLCC (EVERY WEDNESDAY)</b>
<b>THURSDAY</b>	<b>CO-ED DROP IN 1PM GLCC (EVERY THURSDAY)</b>
<b>SATURDAY 02/09</b>	<b>SAGE BOOK BUNCH: 2PM BORDERS SUNRISE. Contact Bob Tomasulo, 954-696-1006</b>
<b>SUNDAY 02/10</b>	<b>SAGE Valentine Dinner Dance- Primavera Restaurant. Reservations close Wednesday, 2/6.</b>
<b>WEDNESDAY 02/13</b>	<b>SAGE WOMEN's LUNCH:11:30AM, Islamorada Fish Company, Dania Beach. Contact Jan at 954-428-2998 by Tuesday, 2/12.</b>
<b>MONDAY 02/18</b>	<b>SAGE MOVIE, "OUTRAGEOUS", 4PM, GLCC Followed by Dinner: TBD</b>
<b>SATURDAY 02/23</b>	<b>SAGE PICNIC at T. Y. Park, 1 - 4 PM</b>
<b>MONDAY 02/25</b>	<b>SAGE MEN'S SINGLES: 5:30PM TROPICS. Contact, John Chandler, 954-427-5355</b>
MARCH 2008	ACTIVITY / EVENT
<b>SATURDAY 03/01</b>	<b>BOARD MEETING: 9:30 AM LUNCH &amp; LEARN: 12:30PM</b> HERB SKOLNICK COMMUNITY CENTER-PALM AIRE 800 SW 36TH AVE, POMPANO BEACH
<b>TUESDAYS 2ND &amp; 4TH</b>	<b>COMPUTER CLUB</b> CONTACT KEN GOODMAN FOR DETAILS AT: (954)720-0833
<b>WEDNESDAY</b>	<b>MEN'S DROP IN 1PM GLCC (EVERY WEDNESDAY)</b>
<b>THURSDAY</b>	<b>CO-ED DROP IN 1PM GLCC (EVERY THURSDAY)</b>
<b>SATURDAY 03/08</b>	<b>SAGE BOOK BUNCH: 2PM BORDERS SUNRISE. Contact Bob Tomasulo, 954-696-1006</b>
<b>WEDNESDAY 03/12</b>	<b>SAGE WOMEN's LUNCH:12 NOON (TBD). Contact Jan at 954-428-2998</b>
<b>THURSDAY 03/13</b>	<b>SAGE Bus Trip to Actor's Playhouse for "FOOTLOOSE". RESERVATIONS CLOSE NO LATER THAN 03/05</b>
<b>SATURDAY 03/15</b>	<b>SAGE HEALTH FAIR at the GLCC</b>
<b>MONDAY 03/17</b>	<b>SAGE MOVIE, "COWBOYS &amp; ANGELS", 4PM, GLCC Followed by St. Patrick's Day Dinner</b>
<b>MONDAY 03/24</b>	<b>SAGE MEN'S SINGLES: 5:30PM TROPICS. Contact, John Chandler, 954-427-5355</b>
<b>SUNDAY 03/30</b>	<b>SAGE ANNUAL MEETING and ELECTION, Palm Aire Country Club</b>
	(continued on other side)

## SAGE 3 MONTH CALENDAR OF EVENTS AND ACTIVITIES FEBRUARY 2008 THRU APRIL 2008

APRIL 2008	ACTIVITY / EVENT
SATURDAY 04/05	BOARD MEETING: 9:30 AM LUNCH & LEARN: 12:30PM HERB SKOLNICK COMMUNITY CENTER-PALM AIRE 800 SW 36TH AVE, POMPANO BEACH
TUESDAYS 2ND & 4TH	COMPUTER CLUB CONTACT KEN GOODMAN FOR DETAILS AT: (954)720-0833
WEDNESDAY	MEN'S DROP IN 1PM GLCC (EVERY WEDNESDAY)
THURSDAY	CO-ED DROP IN 1PM GLCC (EVERY THURSDAY)
WEDNESDAY 04/09	SAGE WOMEN'S LUNCH: 12 NOON (TBD). Contact Jan at 954-428-2998
SATURDAY 04/12	SAGE BOOK BUNCH: 2PM BORDERS SUNRISE. Contact Bob Tomasulo, 954-696-1006
SAT & SUN 4/12-4/1	PRIDE FEST 2008, War Memorial Auditorium, Holiday Park. Please visit the SAGE booth!
SATURDAY 04/12	SAGE VARIETY SHOW 2008, MCC 8PM, One show only! Tickets \$25, please call the SAGE office.
MONDAY 04/21	SAGE MOVIE, "BILLY ELLIOT", 4PM, GLCC Followed TBD
MONDAY 04/28	SAGE MEN'S SINGLES: 5:30PM TROPICS. Contact, John Chandler, 954-427-5355

**SAGE VALENTINE'S DINNER at PRIMAVERA RESTAURANT**

**830 East Oakland Park Blvd., Ft. Lauderdale, FL. 33334**

(954) 564-6363

**SUNDAY, February 10, 2008 6PM-9PM**

6-7PM: Seating, Dancing and Complimentary Before-Dinner Drinks from a *House Selection of RED and WHITE WINES (or Soft Drinks or Iced Tea)*

7-8PM: **MAIN MENU**

*Plated APPETIZERS' SAMPLER of:*

Pastry Shells with Four Formaggi/ Eggplant Parmigiana in-crust /Stuffed Mushroom Caps  
House **SALAD with GORGONZOLA** or **Homemade MINISTRONE SOUP**

**ENTREE: Choice of one from:**

**VEAL CHOP** -Bone-In -Crusted Florentine-Style  
(with Tomato Glaze)

**CHICKEN BREAST** *stuffed* with Wild Mushrooms & Sun Dried Tomatoes  
(with Mushroom Sauce)

**SNAPPER OREGANTA** *topped* with Aromatic Breadcrumbs  
(with fresh Tomato Livornese Sauce)

**VEGETABLE & CHEESE CANELLONI**  
(with Pink Vodka Sauce)

*(all served with Fresh Rolls, Chef's VEGETABLE & PASTA Sides)*



8:30-9PM: **DESSERT:**

**SPECIAL SAGE VALENTINE'S ORANGE CREME CAKE**

Coffee/Tea/Esspresso

**Continuous Entertainment for your listening and dancing pleasure featuring  
the romantic sounds of Mr. LARRY ROBERTS on Keyboard**

**Pricing: \$33.00 @ for MEMBERS or \$35.00 @ for NON-MEMBERS**

**Reservations Close: Wednesday, February 6, 2008 -NO REFUNDS afterwards**

-----  
**SAGE VALENTINES DAY DINNER at PRIMAVERA RESTAURANT**  
MEMBERS @ \$33.00 & NON-MEMBERS @ \$35.00 My Phone # \_\_\_\_\_

**\*\*\*\*\* PLEASE CHECK HERE: ( ) IF YOU WISH TO RESERVE A TABLE of EIGHT, NINE or TEN\*\*\*\*\***  
**Please LIST ALL GUESTS and SEND ONE CHECK FOR ALL GUESTS**

Name: \_\_\_\_\_ Choose One: Veal Chop\_\_ Chicken \_\_ Snapper \_\_ Canelloni \_\_

Name: \_\_\_\_\_ Choose One: Veal Chop\_\_ Chicken \_\_ Snapper \_\_ Canelloni \_\_

Name: \_\_\_\_\_ Choose One: Veal Chop\_\_ Chicken \_\_ Snapper \_\_ Canelloni \_\_

Name: \_\_\_\_\_ Choose One: Veal Chop\_\_ Chicken \_\_ Snapper \_\_ Canelloni \_\_

**For TABLE RESERVATIONS, please continue on other side for your remaining guests ->**

**Mail to SAGE at 8333 W. McNAB Road, STE. 239, TAMARAC, FL. 33321**

Questions: Call the SAGE office at (954) 720-0833

A SAGE-SPONSORED ACTIVITY



# AN OLD FASHIONED SAGE PICNIC

Join us on **SATURDAY, FEBRUARY 23rd**  
and share some **GOOD VIBRATIONS** at **T.Y. Park**  
*Topeekeegee-Yugnee Park*

(The Seminole name of this 150-acre urban park means "meeting or gathering place.")

**From 1PM-4PM**

***Hamburgers & Hot  
Dogs -all freshly  
cooked on the grills***

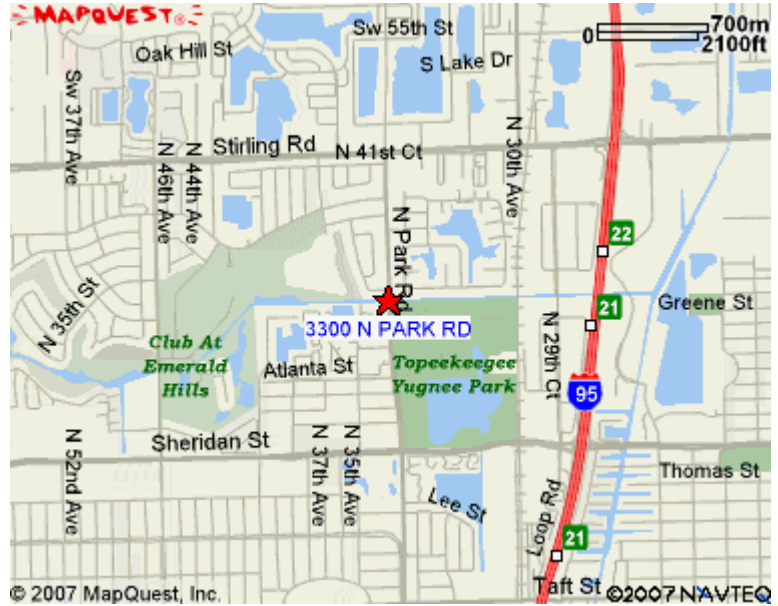
Cole Slaw

Potato Salad

Cookies

Sodas & Water

& **SURPRISES**



**T.Y. Park  
Pavilion #4  
3300 N. PARK RD.  
just West of I-95  
and Sheridan St.  
Hollywood, FL.  
(954) 985-1980**

**Pricing: \$10.00 @ Members\* & \$12.00 @ Non-Members\***

***Bring a chair or a chaise, some board games,  
and a good mood -and "Off" (just in case)***

**Reservations close Wednesday, February 20th -NO REFUNDS**

**\*NO RESERVATION: Pay at Park: \$5 More @**

-----  
**SAGE Picnic at T.Y. PARK**

\_\_\_\_\_ MEMBERS @ \$10.00 \_\_\_\_\_ Non-MEMBERS @ \$12.00 My Phone# \_\_\_\_\_

NAME: \_\_\_\_\_

NAME: \_\_\_\_\_

NAME: \_\_\_\_\_

NAME: \_\_\_\_\_

**Mail to SAGE at: 8333 W. McNAB RD., STE. 239, TAMARAC, FL. 33321**

Questions? Call the SAGE Office at: (954) 720-0833

A SAGE Sponsored Activity