

# THE SAGE

The Newsletter of SAGE of South Florida

"SENIOR ACTION in a GAY ENVIRONMENT"

APRIL 2009

## SAGE'S LIFELINES: MEMBERS, VOLUNTEERS, DONORS AND BOARD

~ by Carl M. Galli ~

Imagine, if you will, that SAGE is a contestant on TV's "Who Wants to be a Millionaire?" Who are our lifelines? Who do we call on in times of need?

### MEMBERS

Our first lifeline is you - our members. Without you we would have no reason for being. We could plan all we want, but without your support, it would all be for nothing. For this reason, I was extremely pleased to review the 5-and-10 year membership lists, and to realize that we had so many members who have continuously supported SAGE throughout those times. **Because of this, we decided to honor you with 5-and-10 year pins.** We identified those who have been continuously active prior to December 31, 2008. (Every list needs a cut-off date. Of course next year, we will have a new list.) And, as I have said previously, **we were pleasantly surprised that over a third of our membership has stuck with us through thick-and-thin. So begins a new SAGE tradition: Starting with the March 29th Annual Meeting we will begin passing out your pins at SAGE activities throughout the year. We hope to get to everyone, and to meet all our members personally.** (But if you cannot make it to any events, don't worry: We will get your pins to you one way or the other.)

**THANK YOU ALL FOR YOUR SUPPORT!**

### VOLUNTEERS

Of course, even given the talents of our Board Members, **we could not single-handedly pull-off most of our events.** Our General Monthly Meeting at the Saturday "Lunch and Learn", requires the reception table to be staffed; the buffet line to be staffed; people to handle the 50/50; someone to plan the educational program; someone to greet the members and the speakers; people to shop for, set-up and breakdown the table set-ups; ETC! And this is only one example.

If you think that sometimes SAGE members can be a little cliquish, **TRY VOLUNTEERING.** This is a great way to break the ice! **You'll get to meet and interact with other members - and your Board.** The vast majority of our volunteers come directly from our Membership pool (or their friends and partners)

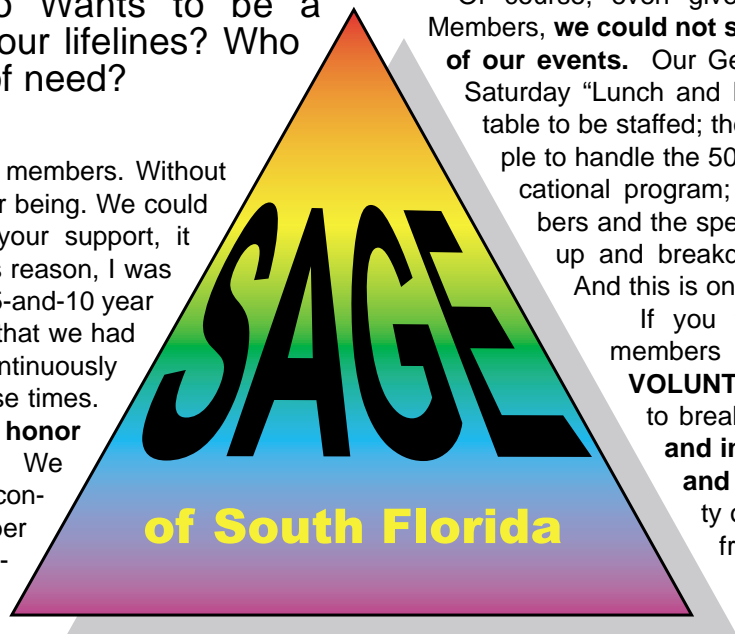
So PLEASE GIVE IT A TRY. And to those of you who do volunteer

**THANK YOU ALL FOR YOUR SUPPORT!**

### DONORS

Most SAGE affiliates throughout the U.S. are under the auspices of their respective community centers. Your SAGE is not. **SAGE of South Florida is an independent and autonomous entity.** While we are affiliated with the others,

(CONTINUED ON PAGE 2)



## Highlights . . .

Pertinent Information . . . . . page 2	Friendly Support Program . . . . . page 5	Monthly Movie . . . . . page 10
SAGE Classifieds . . . . . page 2	Valentine's Day at Primavera . . . . . page 6	High Cost of Mailing . . . . . page 10
Thank You Volunteers . . . . . page 2	Valentine's Day at Primavera . . . . . page 7	SAGE Co-Ed Drop-in . . . . . page 10
Men's Wednesday Drop-In . . . . . page 3	Welcome New Members . . . . . page 9	Membership Application . . . . . page 12
SAGE Computer Club . . . . . page 3	SAGE Birthdays . . . . . page 9	SAGE Women . . . . . page 13
Saturday Luncheon . . . . . page 4	Men's Singles Group . . . . . page 9	Book Bunch News . . . . . page 13
Sharing SAGE with Others . . . . . page 5	Social Notes . . . . . page 9	
Members Helping Members . . . . . page 5	Social Notes . . . . . page 10	

## SAGE of South Florida, Inc.

8333 West McNab Road, Suite 239  
Tamarac, Florida 33321

All Copy Deadline: 8th of the month  
Message Line: 954-720-0833  
Email to Editor: [sageoffice@bellsouth.net](mailto:sageoffice@bellsouth.net)  
Office Fax: 954-720-9590  
Website: [www.sagewebsite.org](http://www.sagewebsite.org)

### BOARD MEMBERS

President ..... Carl M. Galli  
Vice President ..... Ken Goodman  
Secretary ..... Ann Smith  
Treasurer ..... Ken Moore

### BOARD MEMBERS AT LARGE

Hank Brooks, Ron Catena, John Chandler, Jan Kronholm,  
Sal Orlando, Betty Ann Priscak, Joyce Schweitzer

### COMMITTEE COORDINATORS

Advertising ..... John Chandler  
Archivist ..... Hank Brooks  
Co-ed Drop-In/Mixed Nuts ..... Richard Langhorn,  
Mary O'Connor  
Education ..... Jean Johnson  
Fund Raising/Grant Selection ..... Ron Catena,  
Ken Moore, Joyce Schweitzer  
Membership ..... Ann Smith  
Men's Drop-In ..... Ron Catena, Norm Peters  
Men's Singles ..... John Chandler  
Newsletter Editor ..... Hank Brooks  
Newsletter Mailing ..... Les Oldenbusch  
Office Manager ..... Ken Goodman  
Public Affairs ..... Ron Catena  
Saturday Lunch & Learn ..... Sal Orlando  
SAGE Women ..... Jan Kronholm  
Social Activities ..... Carl M. Galli  
Webmaster ..... Richard Bunyan

*Appearance of an advertisement in this newsletter does not constitute endorsement by SAGE of South Florida, Inc., of the service being offered. We thank our advertisers for helping us to pay for printing this newsletter.*

### SAGE EDITORIAL POLICY

SAGE welcomes contributions to this newsletter. An author may request their entry be "anonymous." However, the submission as received by SAGE must be accompanied by the full name and address of the author. Items will be published at our discretion. If we feel we can not publish a submission anonymously, we will contact the author. We reserve the right to edit items for size considerations, clarity, or standards of decency.

## SAGE Classifieds

### SAGE ADVERTISING POLICY

Our monthly Newsletter is partially underwritten by advertising revenue. We have a written fee schedule for various sizes and number of months. An insert, instead of display advertising, is also available for businesses and organizations at a very reasonable rate. Contact the SAGE office at 954-720-0833 or E-Mail at [sageoffice@bellsouth.net](mailto:sageoffice@bellsouth.net) for more information about business cards to full-page ads, classifieds and flyers. We appreciate our business supporters. As members, let's support them as much as possible.

(CONTINUED FROM PAGE 1 – SAGE LIFELINES)

**we do not receive funding from them.** While we fully support the South Florida GLCC, we receive no funding from them. Your Membership Fees pay a portion of our expenses. While most of our activities and events are designed to be self-supporting, we rarely charge what other groups charge for similar functions. At times, when we have to make specific guarantees of numbers in attendance or purchase tickets way in advance, we have to make the best guesses we can. Most times, this works out. Sometimes, unfortunately, we are left holding a couple of tickets we have been unable to sell - and we have to eat the difference. **We count on your support to fill-in the gaps so we can continue to offer you the vast array of choices of activities that we normally do.** Some of our Donors wish to remain **anonymous - and I want to thank them, again, for their contributions.** For those who don't mind being mentioned, we periodically publish our SAGE ANGELS list, acknowledging your tax-deductible donations. Please remember the organization which has meant so much to you over the years. To those who have given, and will give:

**THANK YOU ALL FOR YOUR SUPPORT!**

### BOARD

Unlike many other SAGE affiliates, **all your Board Members are unpaid volunteers.** We do what we do out of love for the organization and its mission, and out of real care for our general membership. We try to maintain some continuity from year-to-year – but every year we also need "new blood". **This year I want to recognize Jan Kronholm and Kenneth Moore** who have helped shape the policies and programs of SAGE throughout several years. They are leaving the Board for personal reasons - and, of course, we wish them well in their future endeavors. But while replacing them will be difficult, we need to continue on. We are confident that the **new candidates (Nancy Drennen and Jean Johnson) will serve you well, and bring both a sense of continuity and new blood.**

**To the Returning Members of the Board for your dedication and talent and devotion: Ann Smith, Betty Ann Priscak, Hank Brooks, John Chandler, Joyce Schweitzer, Ken Goodman, Ron Catena, and Sal Orlando:**

**THANK YOU ALL FOR YOUR SUPPORT!**

## THANK YOU VOLUNTEERS

The members of SAGE wish to thank Joyce Schweitzer, Barbara Sussman and Don Brunelle for serving at last month's Lunch and Learn, and Phyllis Foster and Fran Lichtman for selling the 50/50 raffles. We continue to thank Les Oldenbusch and John G. Harris for setting up the luncheons every single month, and for providing us with water and cups. Thanks guys for schlepping all that stuff back and forth from your home every month. ■



**Home health care**  
**When you *need* it. Where you *want* it.**

FREE Emergency Button  
 Service for New Clients

For over 20 years, Atlantic AllCare has been providing a full range of private home health care services. We are family owned and operated, and work with many insurance companies to accomplish our clients' individual long-term care policy requirements and the filing of claims.

...We emphasize the *CARE* in home care.

- Companionship & Personal Care, Including All Activities Of Daily Living
- Medication Reminders
- Meal Planning & Preparation
- Shopping And Driving To Doctors' Appointments, The Pharmacy & To Social Events
- Light Housekeeping & Laundry
- Respite & Vacation Care

**Broward • 954-427-4546**  
**Palm Beach • 561-912-9511**

[www.atlanticallcare.com](http://www.atlanticallcare.com)

License #HHA20113096, Insured & Bonded



**FREE**  
 Day of Care  
 (30-day minimum)

With this coupon. New clients only.  
 Not valid with any other offer. Expires 4/30/08.



**MEN'S WEDNESDAY DROP-IN**  
 ~ by Ron Catena ~

It's nice to see so many new guys quickly becoming regulars at the Men's Drop In. A warm welcome awaits everyone.

Dr. Norm Peters, who is the group facilitator puts his wonderful people skills to work each week insuring that everyone has a chance to weigh in on the many topics of discussion. With such a diverse bunch of guys the opinions are varied and fun.

Topics can range from the President's latest speech to who won an Academy Award. With so many movie buffs in the crowd, the opinions run the gamut from two thumbs up to a gasp and two thumbs down.

Allen Sandler and his special someone visiting from Italy, Antonio Bardelli, hosted a delightful evening of dinner with many drop in regulars.

Bill Woodward and Dr. Norm Peters, showcased their magnificent new home with a lovely dinner party. Of course, with Bill, it's a laugh a minute. I can tell you that the one liners were flying like a laser show.

Dick Schwarz regaled a group of guys over coffee, sharing stories of his recent trip to Southeast Asia. It took many hours in the air to reach his destination and then to return to his special someone, Tom Massey.

As you no doubt know, the Men's Drop In meets every Wednesday from 1-3 PM at the GLCC on Andrews Avenue. Like all SAGE activities fun and laughter are the norm. Meeting new people and seeing old friends is key to a healthy life as we get older.

The social committee is busy planning the fall cruise. If you are a past cruiser you know how much fun we all had, you don't want to miss this delightful time. Many drop in members will be enjoying fun days at sea with fellow SAGE members, so don't miss out! Sign up now! ***This is a SAGE sponsored activity.*** ■

**SAGE COMPUTER CLUB**  
 ~ by Ken Goodman ~

The April meeting of the SAGE computer club will be at the GLCC on Andrews Avenue on Tuesday April 14, 2009 at 4PM. Call for directions if you need them at 954-720-0833.

Come and learn how to use your computer more efficiently or to see what you have been missing. We discuss all aspects of the personal computer. We discuss Windows XP and Vista as well as Apple OS/X operating systems. We start by discussing a specific topic of interest to the group and then we allocate time to resolve any issues and answer questions you may have. ***This is a SAGE sponsored activity.*** ■

OPEN DOOR. OPEN MIND.



Dean J. Trantalis  
Attorney at Law  
2255 Wilton Drive  
Wilton Manors, FL 33305

tel: 954.566.2226  
fax: 954.566.2248  
dean@trantalis.com  
www.trantalis.com

Real Estate | Wills and Trusts | Business Transactions

DEAN TRANTALIS

The hiring of a lawyer is an important decision that should not only be based on advertisements. Before you decide, ask the lawyer to send you free written information about their qualifications and experience.

## MONTHLY BOARD MEETING & SATURDAY LUNCH & LEARN

*12:30 PM, APRIL 4, 2009*

**AT THE HERB SKOLNICK  
COMMUNITY CENTER**  
*800 S.W 36th AVENUE, POMPANO BEACH, FL*

**RESERVATIONS REQUIRED!!!!!!!**  
**Members with reservations: \$12.00**  
**All others: \$14.00**

Doors open at 12:00 PM  
If you arrive early, please make yourself comfortable in the lobby and meet and mingle with other SAGE members and their guests.

*Reservations must be made by  
12:30 PM on the Thursday preceding  
The Luncheon.*

For reservations call the SAGE Message  
Hotline, 954-720-0833 or reserve by  
E-Mail: [sageoffice@bellsouth.net](mailto:sageoffice@bellsouth.net)

### ~ MENU ~

Salad

Vegetarian "Paella"  
Rice with Assorted Vegetables

Chicken Breast in a cream  
and Mushroom Sauce

Potatoes "Lyonnaise"  
with Onions and Parsley

*Our Honored Speaker will be  
The Sheriff of Broward County,  
Mr. Al Lamberti*

*Who will speak on elder and gay safety issues*

## SHARING SAGE WITH OTHERS

Reconnecting with old friends and meeting new acquaintances is a great part of the SAGE tradition. We invite you to share this tradition by inviting someone new to SAGE to one of our many SAGE sponsored events. Share the camaraderie and support found among SAGE members with others.

When you invite someone new to any of our SAGE sponsored events and that friend joins SAGE, he or she will become a SAGE of South Florida member for the reduced fee of \$25.00 for their first year of membership.

Bring a friend along with you the next time you attend or participate in a SAGE sponsored event. Share the tradition. ■

PLEASE  
PATRONIZE  
OUR  
ADVERTISERS

## SAGE MEMBERS HELPING SAGE MEMBERS

Did you know that every month SAGE Members perform acts of kindness to other SAGE members? These acts are selfless and therefore go unrecorded and always unrewarded. It is not unusual for a SAGE member to take another to his or her doctor's appointments, medical procedures, such as a colonoscopy, or just for simple food shopping. We don't know that you need help unless you tell us. If you need a ride to somewhere, please call the office at 954-720-0833. We will attempt to find someone in your neighborhood who can help you. We don't promise a 100% success rate, but we will do whatever we can to get you to your destination. Don't be shy. Let's hear from you. ■

## SAGE FRIENDLY SUPPORT PROGRAM

We'd like to think we are not merely fair weather friends, but people who really care about our SAGE family. If you know of any SAGE member who would appreciate a friendly call, is sick, in the hospital, recently lost a loved one, or just needs a note of cheer, please contact, for women, either Caroline Leto at 954/925-6288, Jean Arthurton at 561/381-3103; or for men, Leo Glickstein at 954/427-6877. ***This is a SAGE sponsored activity.*** ■

### PAID ADVERTISEMENT

#### The Law Office Of Shawn C. Newman, P.A.

1881 N.E. 26th Street, Executive Suite 212E \* Wilton Manors, FL 33305

Phone: (954) 563-9160 E-Mail: Shawn@ShawnNewman.com

[www.ShawnNewman.com](http://www.ShawnNewman.com)



Shawn C. Newman, Esquire  
Licensed to practice law in Florida,  
New Jersey, & District of Columbia

Estate Planning  
Domestic Agreements  
Wills & Trusts  
Probate Administration  
Wealth Preservation  
Asset Protection  
Powers of Attorney  
Durable Powers of Attorney For Healthcare  
Advanced Directives



*\*Free Initial Consultations Available\**  
*Available weekends & evenings by appointment*

...Helping You Protect Your Legacy For Those You Love

NOTICE: The hiring of a lawyer is an important decision that should not be based solely on advertisements. Before you decide, ask the attorney to send you free written information about qualifications & experience.

# VALENTINE'S DAY AT PRIMAVERA RESTAURANT



# VALENTINE'S DAY AT PRIMAVERA RESTAURANT



A Promise of a never-ending paycheck  
for all your retirement days.



For over 160 years, New York Life Insurance Company has brought peace of mind to millions of Americans. We would like to do the same for you in retirement. Guaranteed Lifetime Income Annuities from New York Life Insurance and Annuity Corporation offer a promise of a regular paycheck for the rest of your life. For more information about our products and services, contact me:

Drew Hershey, CLTC Agent  
New York Life Insurance Company  
100 West Cypress Creek Road  
Fort Lauderdale, Florida 33309  
954-661-8184 Direct  
800-325-1945 Fax  
DHershey@Ft.NewYorkLife.com



*The Company You Keep.®*

LIFE INSURANCE

RETIREMENT INCOME

LONG-TERM CARE INSURANCE

## WELCOME TO OUR NEW MEMBERS

James Barnhill  
Leslie John Basch  
Martin Horowitz  
Jerome Klein  
Dennis MacRae  
Roger O'Shea  
Terry Ralston

Betty Rosse  
Allen Spiess  
Alan R. Sutherland  
Steve Wahl

**5 Year Anniversary:**  
John R. Ginty

## THANKS FOR JOINING SAGE

## SAGE BIRTHDAYS FOR APRIL

The SAGE Board would like to acknowledge the following members whose birthdays are in APRIL, as well as all the other members whose birthdays are this month that we don't have:

Debbie Balas . . . . . Apr 02	Jack Hoppen . . . . . Apr 17
Ronald Seidle . . . . . Apr 02	Thomas Lindros . . . . . Apr 17
Ted Singer . . . . . Apr 02	Robert Stastny . . . . . Apr 19
James V. Ficke . . . . . Apr 06	A Beverly Cole . . . . . Apr 20
Virg Lescinski . . . . . Apr 07	Bill Farrington . . . . . Apr 21
Martin Horowitz . . . . . Apr 08	Michael Keller . . . . . Apr 21
Jean Johnson . . . . . Apr 09	Elaine C Murphy . . . . . Apr 21
Grace J. Waltonen . . . . . Apr 09	Micki Endliss . . . . . Apr 23
Sharon McLean . . . . . Apr 10	Judy Rogers . . . . . Apr 23
Patricia Sammartino . . . . . Apr 10	Geri Toppie . . . . . Apr 27
John Oliva . . . . . Apr 11	Fred A. Vega . . . . . Apr 28
Charles R. Buchanan Jr. Apr 12	John G. Harris . . . . . Apr 30
George S Stein . . . . . Apr 13	Jerry Kasden . . . . . Apr 30
Gibson Bell Smith . . . . . Apr 15	Ugo Marini . . . . . Apr 30
John Chandler . . . . . Apr 16	Jim Ponterio . . . . . Apr 30
Harvey Nathanson . . . . . Apr 16	

If, when you renewed your membership or became a new member you did not give us your birthday, you may call the office and leave the information at: (954) 720-0833 or e-mail us at: sageoffice@bellsouth.net.

## SAGE MEN'S SINGLES GROUP ~ by John Chandler ~

The mission of the monthly gathering is to introduce men who are not in a long term relationship with other men who are in the same situation. The purpose of the monthly meetings is to meet new people, promote and develop a network of friendships for support and socializing, and to provide support to those who have lost their partners because of death or the end of a relationship.

The next meeting is on Monday, April, 27 2009. Join us for cocktails at the bar at 5:30 PM followed by dinner at 6:30 PM at Tropics. Please contact John Chandler at (954) 427-5355 or E-Mail at: stonyman4u@aol.com to make your reservation, and don't forget to wear your "RED SHIRT." *This is a SAGE sponsored activity.* ■

## SOCIAL NOTES ~ by Carl M. Galli ~

By now you realize that this is written early in the month, so we cannot report on any of our March Activities, however, we can thank everyone who attended the **VALENTINES DINNER / DANCE at Primavera**. I understand that from the excellent food, prepared by **Chef Giacomo**, to the music (by the talented entertainer, **Steve Silverman**, to the impeccable service by Primavera's servers, everything was simply marvelous.

**Sal Orlando** is to be congratulated for putting this together in our absence (we were in New Orleans for part of Mardi Gras week) - and a very **Special Thank You must be extended to Ken G., Les Oldenbusch, and John Harris** for "holding the fort" - and making sure that all 51 who attended had a wonderful time. There was dancing and singing and good conversation by the likes of **Warren and Jay; Hank and Leo; Joyce and Barbara; Ron and (his friend from Liverpool, N.Y.) Art; Ken and John; Jack and Al; Clinton and Arthur; Harry and James and Jose; Brandy and Kay; Janice; Eugene, Rex, Michael, Ray, and Lee; Bill and Richard; the lovely John Gearrity; Joel and James; Walter; Marc; Les; Jean Johnson; Joe and Duc; Milton; Carol and Barbara and Nancy; Betty Hibbard; Michael, Ray, Lee, Bill and Richard; Jerry and Joe; Roger, Ted, and Bob; Richard Langhorne; and Ms. Vicki Keller** - with her rendition of "My Funny Valentine"!

So on to April: A little slow, after the hectic pace set by March. Our snow birds are all but gone. But we are having a **SPRING-TIME BRUNCH at Tropics** to bid them goodbye - for now, **hosted by Joyce Schweitzer**, this will put smiles on all your faces - the price is right (\$20 for Members and \$22 for Non-Members) and includes beverages; and an almost unlimited array of fine food on multiple groaning boards. **(Please see your flyer and get your reservations in before the deadline of April 15th.) And get there before 3PM** - so you can enjoy all that is offered - and the company of your SAGE friends.

The price of this is so reasonable (including, as do most of our dinings-out, not just wonderful food, but also beverages, tax and gratuity) that it does bring to mind those who still say that SAGE is only for the "rich". This cannot be further from the truth. **When you think of the different demographics we serve: men and women (and some in-betweens); working and retired; wealthy and middle-class, gay and gayfriendly, we have to offer different things so that everyone can feel comfortable somewhere. When we compare our price-points with those of other non-profits, we are definitely on the low-end.**

SAGE usually breaks even on our activities. It is very rare that we make a profit - and then that's used to cover unexpected shortfalls from other activities. For the same reason, **when we offer plays or concerts, we must guarantee the least number of seats - and pay for these way in advance - in order to get group rates.** Usually, we "sell out". That is why we encourage you to send in your reservations as soon as possible. Occasionally, we are left holding a couple of tickets.

This year we have offered **JOE POSA POSES at LIPS** for a Special to SAGE Group Price of \$31.50 and all who attended can vouch for the quality of the food and the fabulous show. We've had the **VALENTINE'S DINNER / DANCE at Zagat-rated PRIMAVERA** - all inclusive with live entertainment, for just \$30-\$33. We've announced our Annual **PICNIC at T.Y. PARK** for just \$15-

(CONTINUED ON PAGE 10)

\$17 - catered by the Number One **COMPANY PICNIC COMPANY**. Along with our **ANNUAL MEETING** at **GALUPPI'S** for just \$27-\$30. And we've been publicizing our **BRUNCH AT TROPICS** for \$20-\$22. These are all first-rate activities, at first rate venues and **you would be hard-pressed to go anywhere for these prices - let alone add in tax and tip - and entertainment.** (Not to mention the occasional \$20 Men's Drop-In Dinners; and the under \$17 monthly Women's Luncheons at the Ark, and our monthly Lunch and Learn Meetings for \$12-\$14 - catered by Primavera!) We are all feeling the economic crunch. (Your writer is retired.) And we do not expect everyone to go to everything. **But we would encourage everyone to go to something.**

Enjoy...

### **SAVE THE DATES:**

**Sunday, May 3rd** "JERSEY BOYS" at the Broward Center - only 1 ticket remains.

**Sunday, June 21st** "Ft. Lauderdale GAY MEN's CHORUS" at Sunshine Cathedral/MCC - only 21 tickets at Group Rates.

### **OCTOBER CRUISERS:**

BY NOW YOU SHOULD HAVE RECEIVED YOUR INDIVIDUAL INVITATIONS FOR SAGE's THIRD ANNUAL HALLOWEEN CRUISE. WE LEAVE the PORT of MIAMI ON SATURDAY, OCTOBER 31st for our 7-DAY CRUISE TO PUERTO RICO, ST. THOMAS (U.S.V.I.) and ST. MAARTEN. RETURNING TO MIAMI ON SATURDAY, NOVEMBER 7th.

We have contracted with **Cruise Deals.com** to provide necessary travel arrangements and services. **Please see your individual flyers for pricing and other information.**

Fill out your **Sign-Up Sheets** and call **Eric** (our **cruise representative**) at **1-800-668-6414, Ext 146** (Monday-Thursday 1pm to 10 pm & Friday 11am-8pm EST.) He will guide you through the process, take your deposits (all major credit cards are accepted) and **assign your cabin once your deposit totals only \$250 per person.** **U.S. Passports are required for this cruise.**

If you have any specific SAGE-Related questions please e-mail us at: **SAGECRUISE@CS.COM**

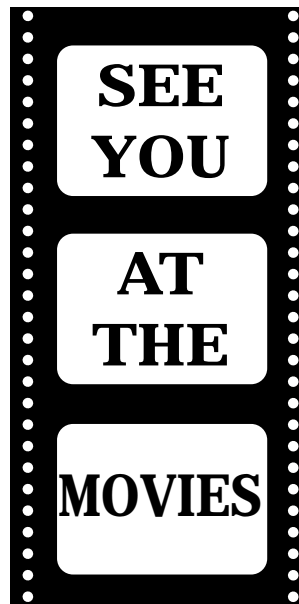
We will be updating this column on a regular basis as we get closer to sail date.

### **COMMUNITY HAPPENINGS:**

**FLORIDA GAY RODEO ASSOCIATION** presents "Sunshine Stampede" April 3 - 5, 2009 at the Bergeron Rodeo Grounds, 4271 Davie Rd., Davie, FL 33314. For further information call: 1-800-692-1644 or (online) **www.FGRA.ORG**

**RIISING ACTION THEATRE CO.**, presents "The Andrews Brothers" April 3 - May 17, 2009 at 840 E. OAKLAND PARK BLVD., OAKLAND PARK, FL 33334. For further information call: 954 561-2225 or (online) **www.RisingActionTheatre.com**

Please remember SAGE  
in your charitable donations  
& estate planning.



## **with Carl M. Galli and Ken Goodman**

Our **April 20th** selection is the **2009 Oscar and Golden Globe winner for Best Animated Feature "WALL-E"**. This is a **Disney-Pixar co-production**; and, according to many who have seen it, rivals anything on the screen in 2008. **Directed (and co-written, with Pete Docter) by Andrew Stanton**, "WALL-E" tells the story of a small waste collecting robot, who, in the not too distant future, inadvertently embarks on a space adventure that will ultimately decide the fate of mankind. It features the **voices**

**of Fred Willard, John Ratzenberger, Kathy Najimy and Sigourney Weaver** - along with stars **Ben Butt as WALL-E and Elissa Knight as EVE**. According to IMDb.com: "for a film with little dialog, it carries more of an emotional punch and has a richer story than any live-action movie this year. The tone and style of the film is completely different for Pixar, and Disney hasn't tried to override the darker thematic elements at all, making the story surprisingly three-dimensional."

"Wall-E" went on to garner another 33 wins and 31 nominations from film critics world wide - proving once again that animated films are not just for children anymore.

Come to the **GLCC on Monday, April 20th, at 4PM** - and share this adventure with us. As always, dinner will follow. Enjoy. **This is a SAGE sponsored activity.** ■

## **HIGH COST OF MAILING**

The cost of mailing the SAGE Newsletter is getting more and more outrageous, especially since the content constantly increases. Did you know that you can receive your Newsletter via E Mail? By doing so, you will be cutting SAGE costs by almost \$2.00 an issue. Please help your organization in its quest to be fiscally responsible. Call the SAGE office at 954-720-0833 and express your desire to become an electronic recipient in this electronic age. ■

## **SAGE THURSDAY CO-ED DROP IN**

We meet each Thursday at GLCC from 1-3 PM for a discussion of any topic that "pops" into your head; covering local and world events and exchanging information on solar/or wind power, cheaper gasoline prices, mpg on new cars, discussing new movies, great and not so great restaurants, etc. If you are new in town, or just bored with same day routines, and want to meet a great bunch of folks, come join us. You'll feel welcome and a part of the group immediately. You'll wonder what took you so long getting here. **This is a SAGE sponsored activity.** ■



Law Offices

## Arthur B. Smith, P.A.

Galleria Professional Building  
915 Middle River Drive, Suite 420  
Fort Lauderdale, Florida 33304  
Phone: 954-564-8844  
Email: ASmith5826@bellsouth.net

Member of the Florida  
and Massachusetts Bar

---

### Trusts

Revocable, Irrevocable  
and  
Charitable Remainder

### Wills

Last Will and Testament  
and  
Related Documents

### Probate

Estate and Trust Administration

### Real Estate

All Transactions

NOTICE: The hiring of a lawyer is an important decision that should not be based solely on advertisements. Before you decide, ask the attorney to send you free written information about qualifications & experience.

**TROPICS  
SIDE CAR**

**LUNCH DAILY 11am-3pm  
with Salad Bar & Soup Station  
plus NEW Internet Café!**

COMMUNITY  
CHOICE AWARDS  
2002, 2003 & 2004  
Restaurant of the Year



**ENTERTAINMENT 7 NIGHTS A WEEK!**

**SUNDAY BRUNCH ONLY \$15<sup>95</sup>**

**MONDAY 10 CHOICES FOR \$11<sup>95</sup>**

**TUESDAYS 2-FOR-1 ENTREES**

**WEDNESDAY**

**PRIME TIME \$10<sup>95</sup>**

**HAPPY HOUR**

**2-for-1**

**All Brands**

**SUNDAY-FRIDAY 4-9pm**

**SATURDAY 4-8pm**



**TROPICS**

Proudly serving South Florida's  
Gay & Lesbian Community  
since 1994

RESTAURANT  
PIANO BAR  
CABARET

2000 WILTON DRIVE (N.E. 4TH AVENUE) • WILTON MANORS, FL 33305  
PH: (954) 537-6000 • FAX: (954) 563-4269 • Dinner Reservations Suggested

**“SENIOR ACTION IN A GAY ENVIRONMENT”**

Dear Folks, Please include a stamped, self-addressed envelope, so we can send you your new MEMBERSHIP CARD. THANK YOU.

NAME: \_\_\_\_\_

ADDRESS: \_\_\_\_\_

CITY: \_\_\_\_\_

STATE: \_\_\_\_\_

ZIP: \_\_\_\_\_

HOME PHONE: \_\_\_\_\_

OFFICE: \_\_\_\_\_

CELL: \_\_\_\_\_

E-MAIL ADDRESS: \_\_\_\_\_

BIRTHDAY: \_\_\_\_\_

COMMITTEE INTEREST: \_\_\_\_\_

CIRCLE ONE:      RENEWAL      NEW MEMBER

PLEASE ENCLOSE A CHECK IN THE AMOUNT OF \$35.00 MADE PAYABLE TO: SAGE OF SOUTH FLORIDA

**MAIL TO:**

SAGE of South Florida, Inc.  
8333 West McNab Road, Suite 239  
Tamarac, FL 33321

**SAGE NEEDS YOU!**  
PLEASE JOIN OR RENEW TODAY

**For additional information, please call the message line: 954-720-0833**

**SAGE WOMEN**  
~ by Ann Smith ~

SAGE Women meet the second Wednesday of every month. This April 8th at 12 noon we meet at The Ark Restaurant, located at 6255 Sterling Road in Davie, 954-584-3075. Reservations must be made by calling Nancy at 954-741-1540.

Each month "SAGE Women" collect food for the FOOD PANTRY. The FOOD PANTRY distributes a minimum of 55 pounds of food per client per month, that's over 10,000 pounds of food. Last month we collected 23 pounds of food. **This is a SAGE sponsored activity.** ■

PLEASE  
PATRONIZE OUR  
ADVERTISERS

**PAID ADVERTISEMENT**

  
**BANKERS**  
LIFE AND CASUALTY COMPANY

*We specialize in seniors*



Gary Kempler  
Senior Trust Advisor  
(954) 328-5418

Medicare Specialist offering:  
Low Cost Supplements  
Part D Drug Plans

Long Term Care at *affordable* rates

Life Insurance

Disability Insurance

Guaranteed Retirement Investments

**PAID ADVERTISEMENT**



*Sunshine Cathedral*

A METROPOLITAN COMMUNITY CHURCH  
AFFILIATED WITH THE CENTER FOR PROGRESSIVE CHRISTIANITY

**Sharing the Light with the World**

1480 SW 9th Avenue  
Fort Lauderdale FL 33315 USA  
Grant Lynn Ford, CANON PASTOR

OFFICE 954-462-2004  
FAX 954-462-7070  
TOLL-FREE 877-750-6390

**PAID ADVERTISEMENT**

**So many "Italian style"  
restaurants...**



**But only one "authentic"  
Primavera!**

Lake Como, near Milan, is famous for fine Italian cuisine. It's where chef/owner Giacomo perfected his culinary talent. No wonder his menu at Primavera features selections you would only find in Italy, with the freshest ingredients and classic flair. All served with professional attention. Vero Italiano—true Italian! Join us at Primavera, and you'll taste it.

Dinner 7 Nights 5:00-10:00 PM  
Reservations suggested  
Private room available  
For 10 to 150 guests  
Lunch or dinner



830 E. Oakland Park Boulevard, Fort Lauderdale  
954.564.6363 • www.trueitalian.com

**BOOK BUNCH NEWS:**  
~ by Wayne Draper ~

The April selection for the SAGE Book Discussion will be ***Flesh and Blood* by Michael Cunningham.**



The author: "The book was written while a lot of people I loved and admired were dying. My desire to write the best book I possibly could was all tangled up with my desire to write a book that would contribute in some way to the battle for a cure for AIDS."

"I think my interest in the post-nuclear family probably comes from being a gay man living through the AIDS epidemic. I've lived through an epidemic that involves seeing all kinds of things, maybe one of the most significant of which is seeing non-biological families come through in the way that biological families might not."

The Book Bunch meets the second Saturday of each month at 2 PM at Borders on Sunrise Blvd., near the Galleria Mall. Discussions are always lively. You don't have to have read the book to participate. Let's see you there. **This is a SAGE sponsored activity.** ■

**PAID ADVERTISEMENT**

# ART & SALADS BY DESIGN

- *Healthy Salads, Delicious Soups & Scrumptious Desserts*
- *Affordable Art, Sculptures, Accessories, Gift Items*
- *Residential & Commercial Interior Design*

2724 E. COMMERCIAL BLVD. FT. LAUDERDALE, FL 33308  
 (954) 491-1007 PH (954) 491-1198 FX  
[www.millenniumartanddesign.com](http://www.millenniumartanddesign.com)



## SAGE MISSION STATEMENT

**SAGE** of South Florida is a non-profit organization for **Senior Action** in a **Gay Environment** to enrich the lives of the GLBT senior community through membership inclusive of age, gender, race, nationality and religion. We believe this can be accomplished by sponsoring social alternatives to provide personal interaction, offering educational opportunities to deal with the special needs of aging, and promoting contact with the isolated and homebound persons of our community. SAGE is also an advocate for the concerns and needs of the senior GLBT community at large, providing referral information of community resources and promoting inter-generational communication in the GLBT community.

**SAGE** was founded in 1994 as a Florida "not for profit" Corporation. (Federal Tax-Exempt status of 501(c)3 allowing tax-deductible donations). ■

**PAID ADVERTISEMENT**



## ANDREWS DINER

*"A Family Restaurant"*

Hosts: Angelo, Gerri & Marla

2980 N. Andrews Avenue  
 Fort Lauderdale, FL 33311  
 954.568.8555



## Comfort Keepers.

*Comforting Solutions for In-Home Care®*

- |               |                        |
|---------------|------------------------|
| Prepare meals | Grocery shop           |
| Run errands   | Light housekeeping     |
| Laundry       | Respite Care           |
| W-2 employees | 24 hour care available |

English Speaking Companionship

**954-825-0155**

[www.COMFORTKEEPERS.COM](http://www.COMFORTKEEPERS.COM)

REG.# 228141

**PAID ADVERTISEMENT**



## FRED HUNTER'S

SINCE 1890  
FUNERAL SERVICE • CREMATION • CEMETERIES

718 S. FEDERAL HIGHWAY, FORT LAUDERDALE

6301 TAFT STREET, HOLLYWOOD, FLORIDA

2401 S. UNIVERSITY DRIVE, DAVIE, FLORIDA

MARK VAN REES, MANAGING DIRECTOR

RON KELLEY, MANAGING DIRECTOR

FAMILY OWNED AND OPERATED  
 FUNERAL HOMES IN FORT LAUDERDALE,  
 HOLLYWOOD, DAVIE/COOPER CITY,

AND

HOLLYWOOD MEMORIAL GARDENS CEMETERY

HOLLYWOOD, FLORIDA

954-527-1550

[WWW.FREDHUNTERS.COM](http://WWW.FREDHUNTERS.COM)

Celebrate the Spring with a SAGE  
**BRUNCH AT TROPICS RESTAURANT**

SUNDAY APRIL 19, 2009

1:00 – 3:30PM (no seating after 3PM)

**Pricing: \$20 @Members or \$22 @Non-Members**

(inclusive of meal, beverages, tax and gratuity)

**BRUNCH OFFERINGS**

**Three HOT Lunch items, plus:**

**Shrimp/Salmon; Carving Station;  
Salads & Desserts; Danishes; Omelet Station; Sunny Side  
Up or Scrambled Eggs; Potatoes: Bacon/Sausage/Corn  
Beef Hash.; Gravy; Biscuits; French Toast;  
Breakfast Lasagna; Quiches**

**BEVERAGES**

**TWO COCKTAILS - BLOODY MARY, MIMOSA,  
or SCREW DRIVER  
Plus, for SAGE, *Coffee or Tea***

**Tropics is located at 2000 Wilton Drive, Wilton Manors**

TEL: (954) 537-6000

**Reservations Close NO LATER THAN: Wednesday, April 15, 2009**

*NOTE: Due to Guarantees Made to the Venue, there can be no Refunds*

-----  
SAGE Spring-Time Brunch at TROPICS

\_\_\_\_ MEMBERS @ \$20.00 & \_\_\_\_ NON-MEMBERS @ \$22.00 My Phone Number: \_\_\_\_\_

Name: \_\_\_\_\_ Name: \_\_\_\_\_

Name: \_\_\_\_\_ Name: \_\_\_\_\_

**Mail with Payment to: SAGE at 8333 W. McNAB Road, STE. 239, TAMARAC, FL. 33321**

Questions: Call the SAGE office at (954) 720-0833

A SAGE-SPONSORED ACTIVITY



**RISEING ACTION THEATRE COMPANY** presents

**The Andrews Brothers**

**Written by Roger Bean**

**Featuring Assorted Musical Hits of the 40's**

Three men who were rejected from the military due to minor health ailments have been serving as stagehands on USO Tours, yet secretly yearning to be onstage. During a gig at a South Pacific Army Base, the trio finagle their way into a guest spot featuring the Andrews Sisters and songstress Peggy Jones. But, when Laverne Andrews gets the chicken pox and the Andrews Sisters have to cancel their appearance, our trusty three don wigs and heels to carry on in “the show must go” on tradition.

"an entertaining crowd pleasing Juke Box Musical...This antic cross dressing, pleasing silly amusement is filled with lush big band numbers from WWII." LA Times

**Pricing: \$35 (Show Only) or \$60 (Primavera Dinner and Show)**  
**\*\$10 from each ticket will go to SAGE**

**SUNDAY, APRIL 12<sup>th</sup> 2009**

**Time: Show is at 8PM**

**Dinner & Show: arrive at Primavera no later than 6PM**

**Theatre is Directly across the Street from Primavera**

**840 E. OAKLAND PARK BLVD. OAKLAND PARK FL 33334**

**Reservations will close *NO LATER THAN WEDNESDAY, April 8<sup>th</sup>***

**NO REFUNDS**

*Rising Action Theatre “The Andrews Brothers” Fund Raiser for SAGE*

\_\_\_ **SHOW ONLY @ \$35.00** or \_\_\_ **DINNER & SHOW @ \$60** My Phone # \_\_\_\_\_

**NAME:** \_\_\_\_\_ **NAME:** \_\_\_\_\_

**NAME:** \_\_\_\_\_ **NAME:** \_\_\_\_\_

**MY ADDRESS:** \_\_\_\_\_

Mail with Payment to: **SAGE, 8333 W. McNab Rd., STE. 239, Tamarac, FL 33321**  
**PHONE: (954) 720-0833** **A SAGE-Sponsored Activity**

# SAGE APRIL 2009 Activities Calendar

Sun	Mon	Tue	Wed	Thu	Fri	Sat
			1 1 PM Men's Drop In @ GLCC	2 CO-ED Drop-In Group @ GLCC - 1PM	3	4 SKOLNICK Ctr. Board Meeting 9:30PM LUNCH & LEARN 12:30PM Call (954) 720-0833 for Reserv..
5	6	7	8 1 PM Men's Drop In @ GLCC SAGE Women's Lunch at ARK 12PM Nancy D. 954-741-1540	9 CO-ED Drop-In Group @ GLCC - 1PM	10	11 BOOK BUNCH - Dis- cussion @ Borders (Sunrise Blvd) - 2PM
12 Andrews Brothers at the Rising Action Theater - 8 PM	13	14 COMPUTER CLUB GLCC. Room 3 Call Ken Goodman 954-720-0833	15 1 PM Men's Drop In @ GLCC	16 CO-ED Drop-In Group @ GLCC - 1PM	17	18
19 Brunch at Tropics - 1 to 3 PM	20 SAGE Movie "WALL-E" - 4PM @ GLCC - fol- lowed by dinner TBD	21	22 1 PM Men's Drop In @ GLCC	23 CO-ED Drop-In Group @ GLCC - 1PM	24	25
26	27 MEN's SINGLES DIN- NER @ TROPICS - 6:30 PM - call John C @ (954) 427-5355	28	29 1 PM Men's Drop In @ GLCC	30 CO-ED Drop-In Group @ GLCC - 1PM	1	2 SKOLNICK Ctr. Board Meeting 9:30PM LUNCH & LEARN 12:30PM Call (954) 720-0833 for Reserv..

# **SAVE the DATES**

**June 14th Sun**

**Dinner at “Lorenzo’s Trattoria” (On Coconut Creek Parkway) – 5:30 pm**

**June 21st Sun**

**“Gay Men’s Chorus” at the MCC Church – 8:00 pm 21 Tickets available**

**Sept 13th Sun**

**SAGE’s 15<sup>th</sup> Anniversary Gala @ the Marriott North – Cocktails @ 6:00 pm -  
Dinner @ 7:30 pm – Tony & Gloria performing**